

State of Wyoming Corner Record

(In compliance with the *CORNER PERPETUATION AND FILING ACT*, Wyoming Statutes, 1997 Section 33-29-140 et. seq., and the Rules and Regulations of the Board of Professional Engineers and Professional Land Surveyors)

Reverse side of this form may be used if more space is needed.

Record of original survey and citation of source of historical information (if corner is lost or obliterated). Description of corner monumentation evidence found and/or monument and accessories established to perpetuate the location of this corner. Sketch of relative location of monument, accessories, and reference points with course and distance to adjacent corner(s) (if determined in this survey). Method and rationale for reestablishment of lost or obliterated corner.

LOCATION: Southeast corner Section 34, T16N, R61W, 6th P.M., Laramie County, Wyoming.

HISTORICAL DATA: Set granite boulder 17x10x6 for corner to sections 34, 35, 2 + 3.

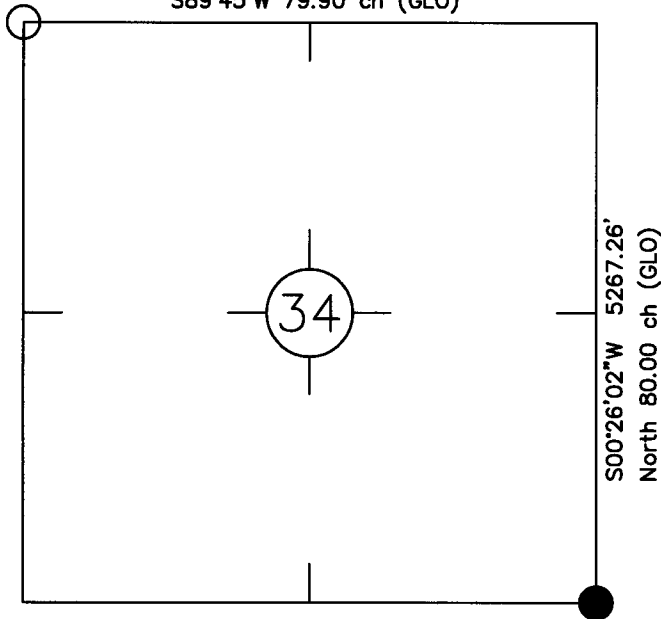
EVIDENCE FOUND: Found a 3.25 inch aluminum cap 4" below the gravel surface in in the vicinity of the centerline of a north/south road stamped as shown.

MONUMENT & ACCESSORIES ESTABLISHED: Nothing established.

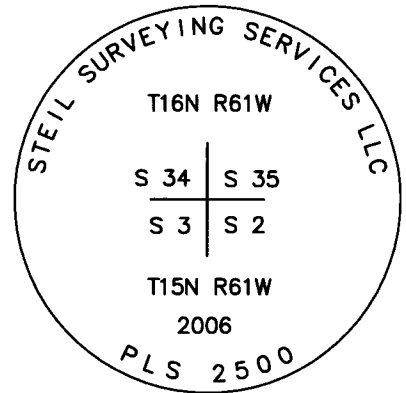
LAT./LONG.: 41°18'08.205"N, 104°10'35.616"W: Geodetic coordinates shown are based on a single static session, post processed by OPUS and a single RTK side shot to the monument. NAD83/(CORS96).

Monument location

S89°51'00"E 5264.54'
S89°45'W 79.90 ch (GLO)



Monument Inscription



See Back

Date of Field Work: 12/30/2008

Office Reference: 1492.01

Cross Index Plat

	1	2	3	4	5	6	7	8	9	10	11	12	13	14	15	16	17	18	19	20	21	22	23	24	25
A	+	+	+	+	+	+	+	+	+	+	+	+	+	+	+	+	+	+	+	+	+	+	+	+	+
B	+	+	+	+	+	+	+	+	+	+	+	+	+	+	+	+	+	+	+	+	+	+	+	+	+
C	+	6	+	5	+	4	+	3	+	2	+	1	+	+	+	+	+	+	+	+	+	+	+	+	
D	+	+	+	+	+	+	+	+	+	+	+	+	+	+	+	+	+	+	+	+	+	+	+	+	
E	+	+	+	+	+	+	+	+	+	+	+	+	+	+	+	+	+	+	+	+	+	+	+	+	
F	+	+	+	+	+	+	+	+	+	+	+	+	+	+	+	+	+	+	+	+	+	+	+	+	
G	+	7	+	8	+	9	+	10	+	11	+	12	+	+	+	+	+	+	+	+	+	+	+	+	
H	+	+	+	+	+	+	+	+	+	+	+	+	+	+	+	+	+	+	+	+	+	+	+	+	
J	+	+	+	+	+	+	+	+	+	+	+	+	+	+	+	+	+	+	+	+	+	+	+	+	
K	+	+	+	+	+	+	+	+	+	+	+	+	+	+	+	+	+	+	+	+	+	+	+	+	
L	+	18	+	17	+	16	+	15	+	14	+	13	+	+	+	+	+	+	+	+	+	+	+	+	
M	+	+	+	+	+	+	+	+	+	+	+	+	+	+	+	+	+	+	+	+	+	+	+	+	
N	+	+	+	+	+	+	+	+	+	+	+	+	+	+	+	+	+	+	+	+	+	+	+	+	
O	+	+	+	+	+	+	+	+	+	+	+	+	+	+	+	+	+	+	+	+	+	+	+	+	
P	+	19	+	20	+	21	+	22	+	23	+	24	+	+	+	+	+	+	+	+	+	+	+	+	
Q	+	+	+	+	+	+	+	+	+	+	+	+	+	+	+	+	+	+	+	+	+	+	+	+	
R	+	+	+	+	+	+	+	+	+	+	+	+	+	+	+	+	+	+	+	+	+	+	+	+	
S	+	+	+	+	+	+	+	+	+	+	+	+	+	+	+	+	+	+	+	+	+	+	+	+	
T	+	30	+	29	+	28	+	27	+	26	+	25	+	+	+	+	+	+	+	+	+	+	+	+	
U	+	+	+	+	+	+	+	+	+	+	+	+	+	+	+	+	+	+	+	+	+	+	+	+	
V	+	+	+	+	+	+	+	+	+	+	+	+	+	+	+	+	+	+	+	+	+	+	+	+	
W	+	+	+	+	+	+	+	+	+	+	+	+	+	+	+	+	+	+	+	+	+	+	+	+	
X	+	31	+	32	+	33	+	34	+	35	+	36	+	+	+	+	+	+	+	+	+	+	+	+	
Y	+	+	+	+	+	+	+	+	+	+	+	+	+	+	+	+	+	+	+	+	+	+	+	+	
Z	+	+	+	+	+	+	+	+	+	+	+	+	+	+	+	+	+	+	+	+	+	+	+	+	
	1	2	3	4	5	6	7	8	9	10	11	12	13	14	15	16	17	18	19	20	21	22	23	24	25

This corner record was prepared by me or under my direction and supervision.

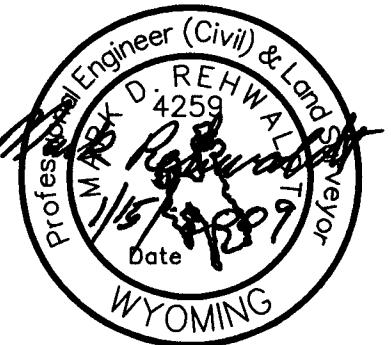
SEAL & SIGNATURE

COFFEY ENGINEERING & SURVEYING, L.L.C.

903 East Grand Avenue
Laramie, Wyoming 82070
(307) 742-7425



Mark D. Rehwaldt, PE/LS #4259



RECORDED 1/16/2009 AT 12:23 PM REC# 514548 JK# 2091 PG# 365
JEBRA K. LATHROP, CLERK OF LARAMIE COUNTY, WY PAGE 1 OF 2

Corner Name Southeast Corner Section 34, T 16 N, R 61 W, 6th P.M.

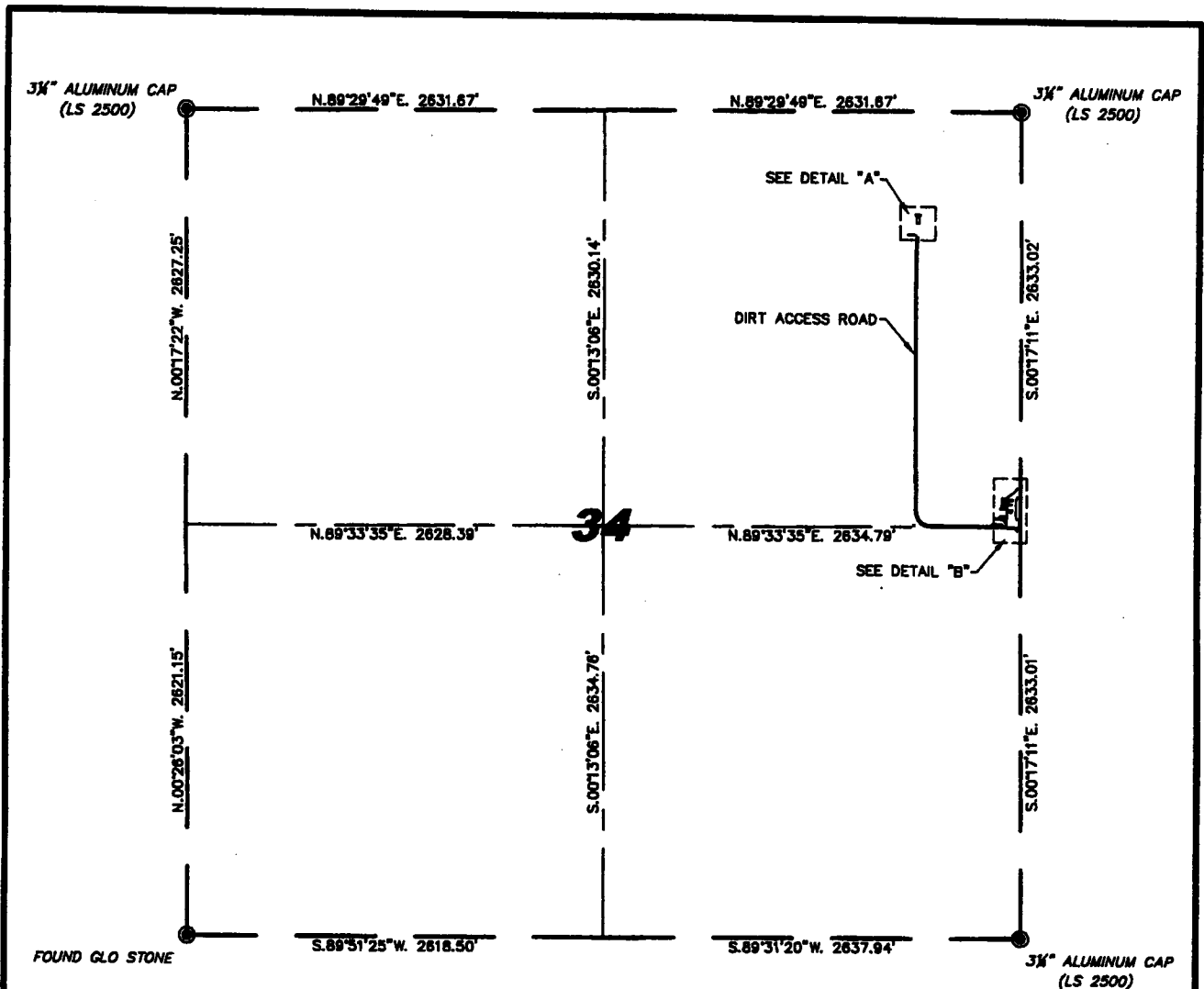
Cross-Index No.: Z-17

County: Laramie Wyoming

SBRPEPLS/PLSW: March 1994; PLSW January 1998

Note:

The distances shown below are based on a coordinate system that is defined roughly at sea level at the clients request. The distances shown on the front are distances based on a local coordinate system at the ground surface.

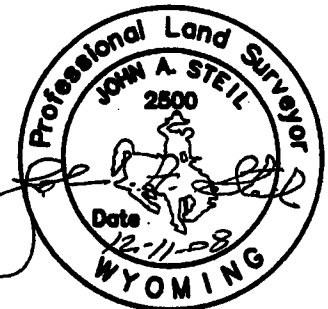


0 1000

Scale: 1" = 1000'

CERTIFICATE OF SURVEYOR

I, John A. Steil, Registered Professional Land Surveyor in the State of Wyoming, for and on behalf of Steil Surveying Services, LLC, hereby state, to the best of my knowledge, information and belief, that this map was prepared from field notes taken during an actual survey made by me or under my direct supervision; and that this map correctly shows the results of said survey and that the monuments found or set are as shown.



SHEET 1 OF 3

DRAWN BY: LSH REF 08114	HANSON 34-41 ASBUILT
DATE DRAWN: 09-30-2008	
DATE OF SURVEY: 09-18-2008	S34, T.16N., R.61W., 6TH P.M.
DWG. NO.: HANSON 34-41 ASB	LARAMIE COUNTY, WYOMING
APPROVED BY: JAS	OPERATOR: DELTA PETROLEUM



STEIL SURVEYING SERVICES, LLC

PROFESSIONAL LAND SURVEYORS
1102 WEST 19th STREET P.O. BOX 2075
PR(807)864-7278 CHEYENNE, WY. 82008



RECORDED 1/16/2009 AT 12:23 PM REC# 514548 JK# 2091 PG# 366
DEBRA K. LATHROP, CLERK OF LARAMIE COUNTY, WY PAGE 2 OF 2